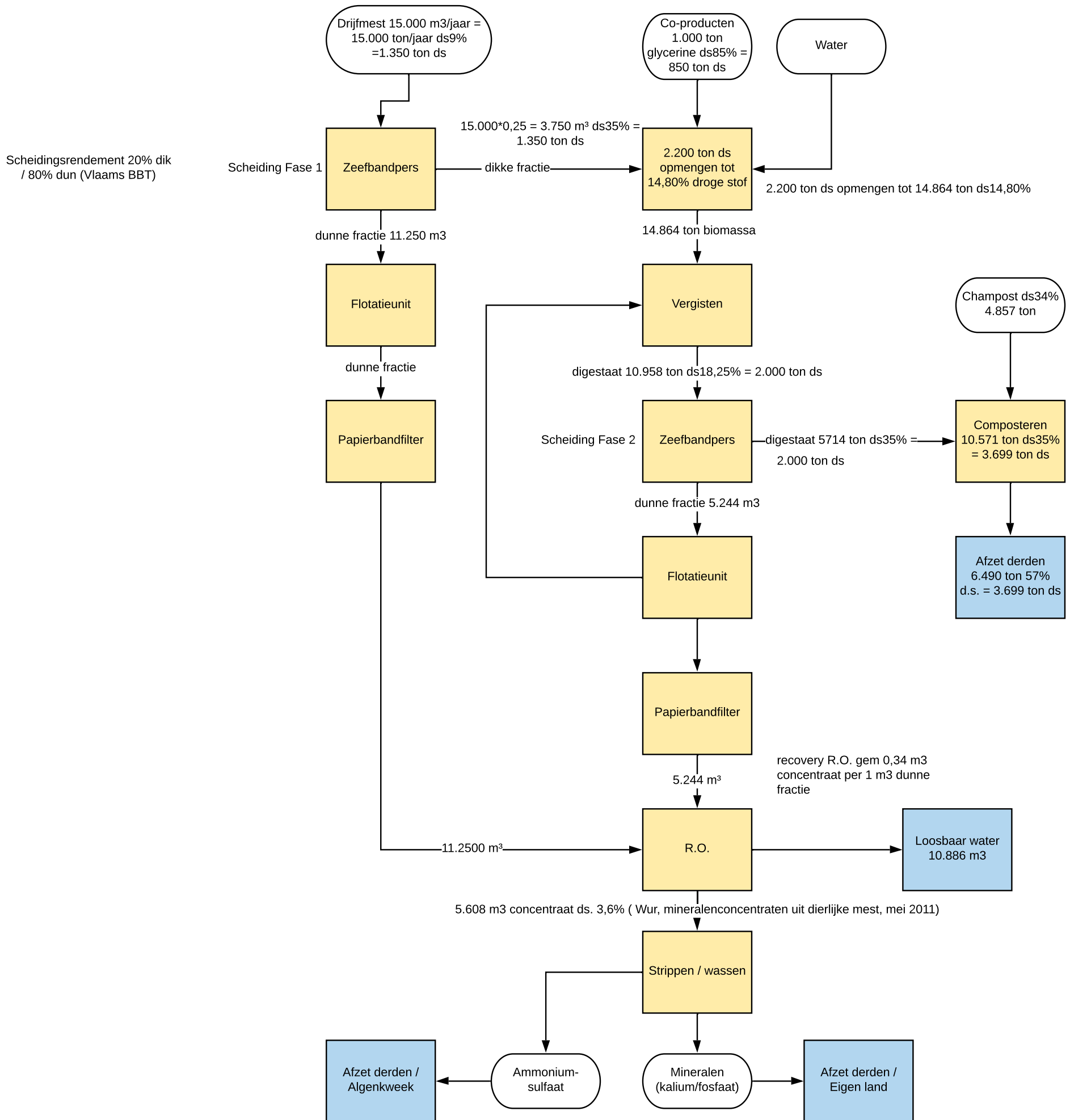


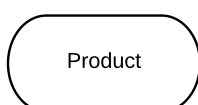
Bijlage 16 Proceschema mestbewerking en algenkweek

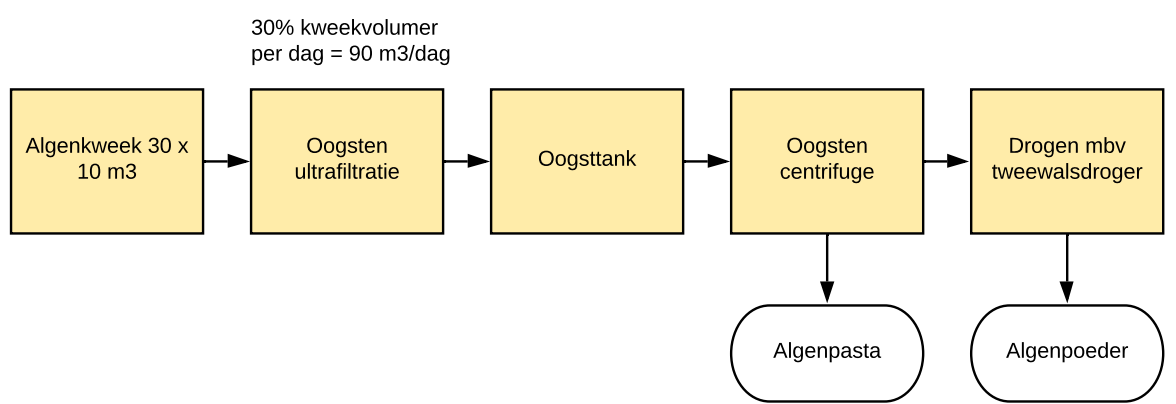
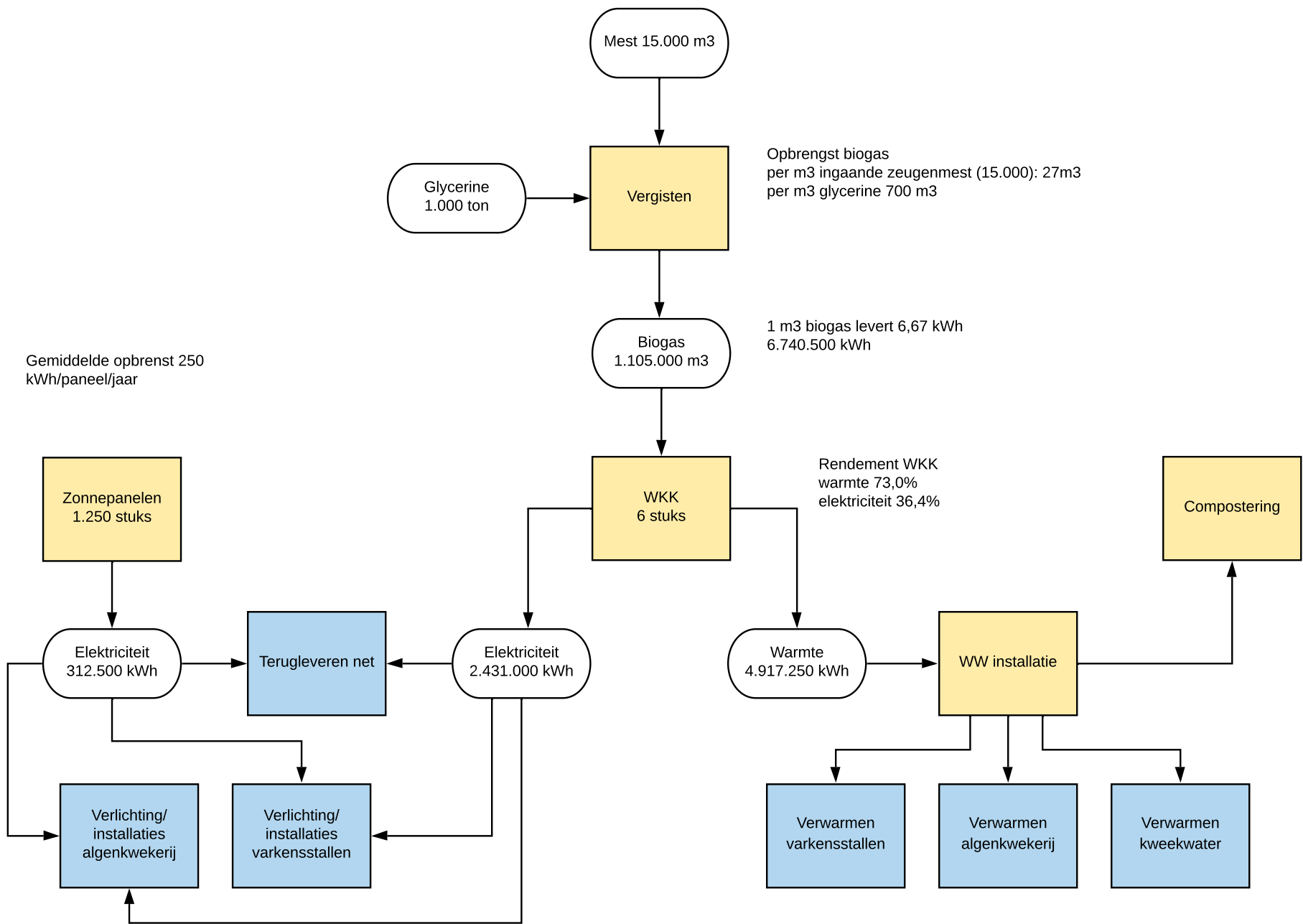


1 m3 drijfmest = 1 ton drijfmest
 Droge stofpercentage drijfmest = 9%



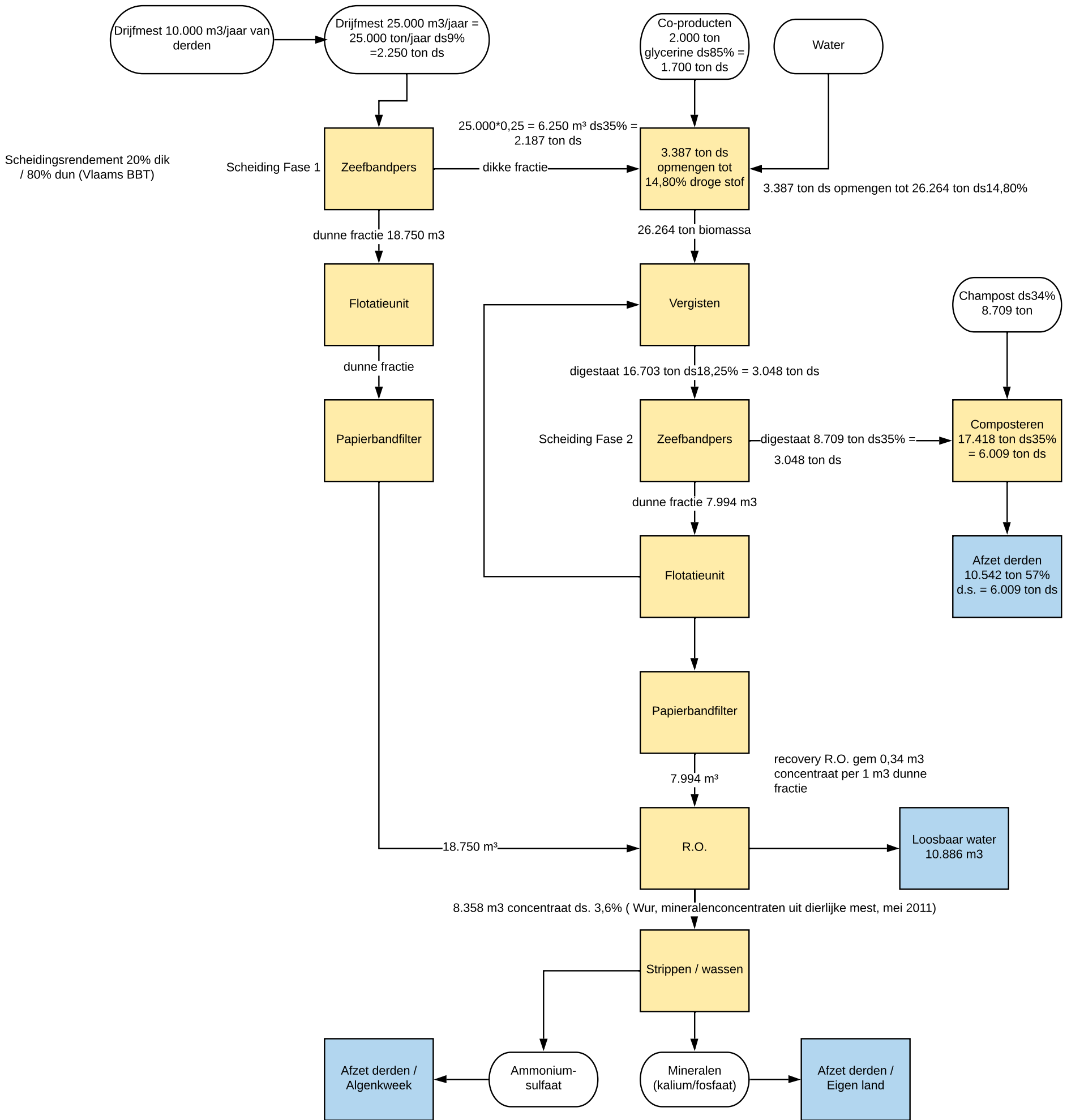
LEGENDA





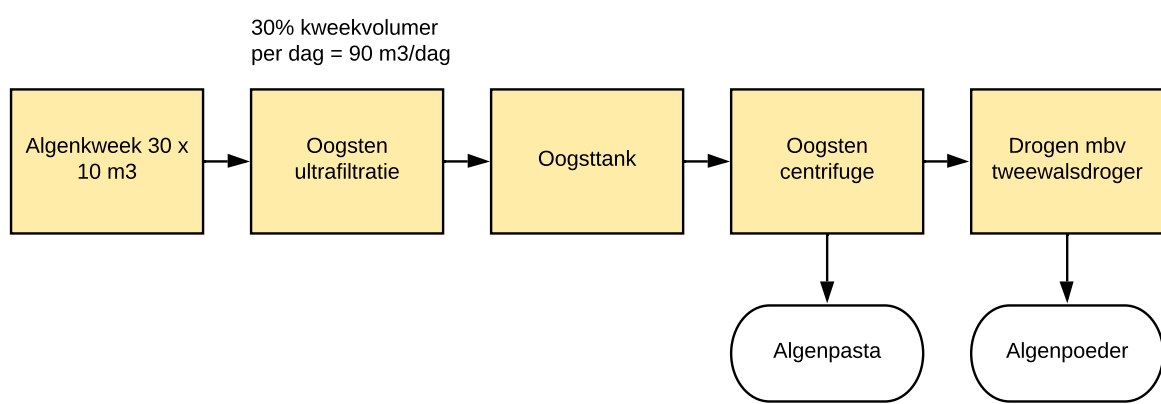
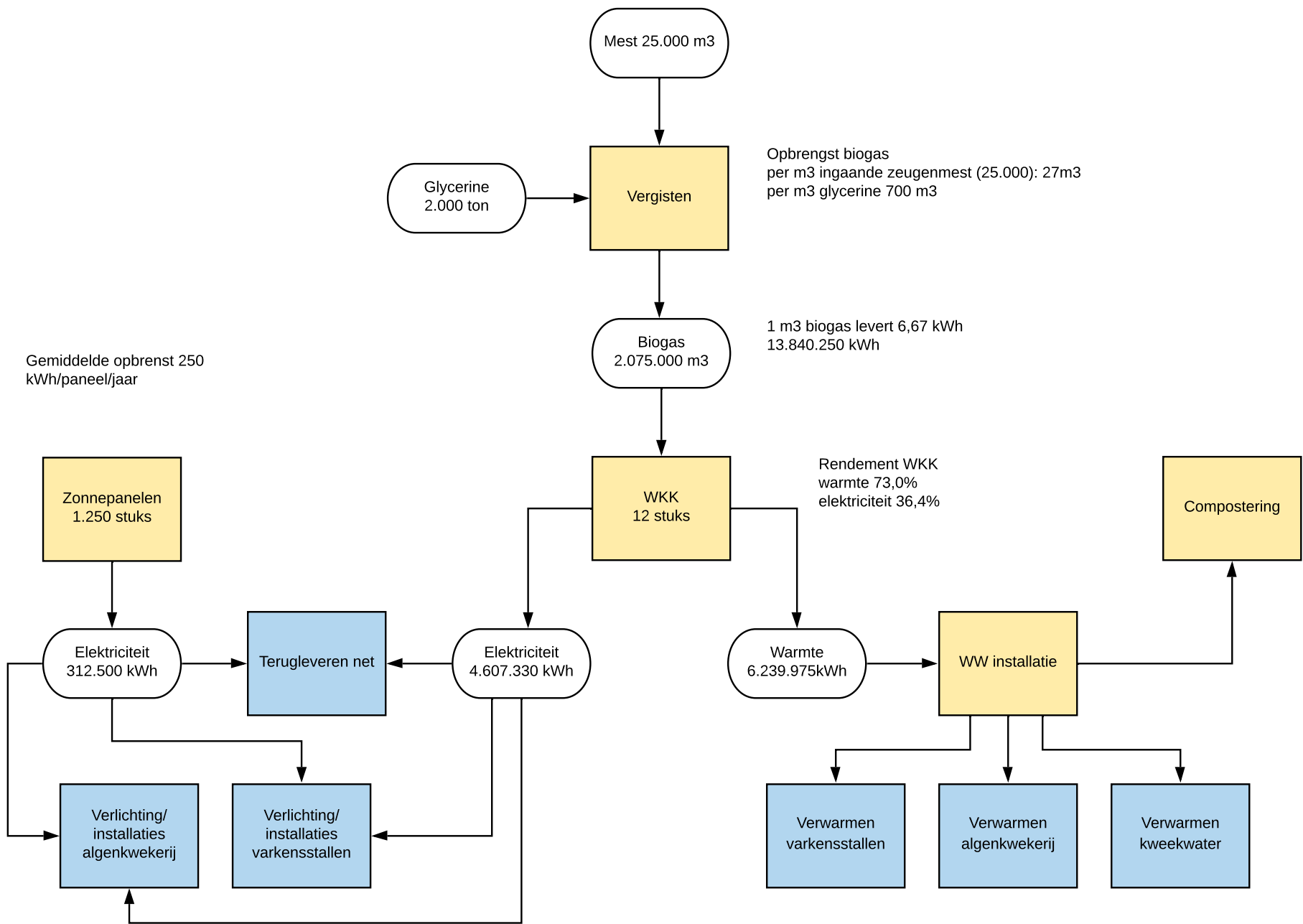
Productiecapaciteit = 90 kg/dag of 32,85 ton/jr

1 m3 drijfmest = 1 ton drijfmest
 Droge stofpercentage drijfmest = 9%



LEGENDA





Productiecapaciteit = 90 kg/dag of 32,85 ton/jr