



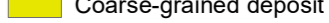
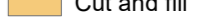

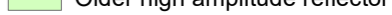
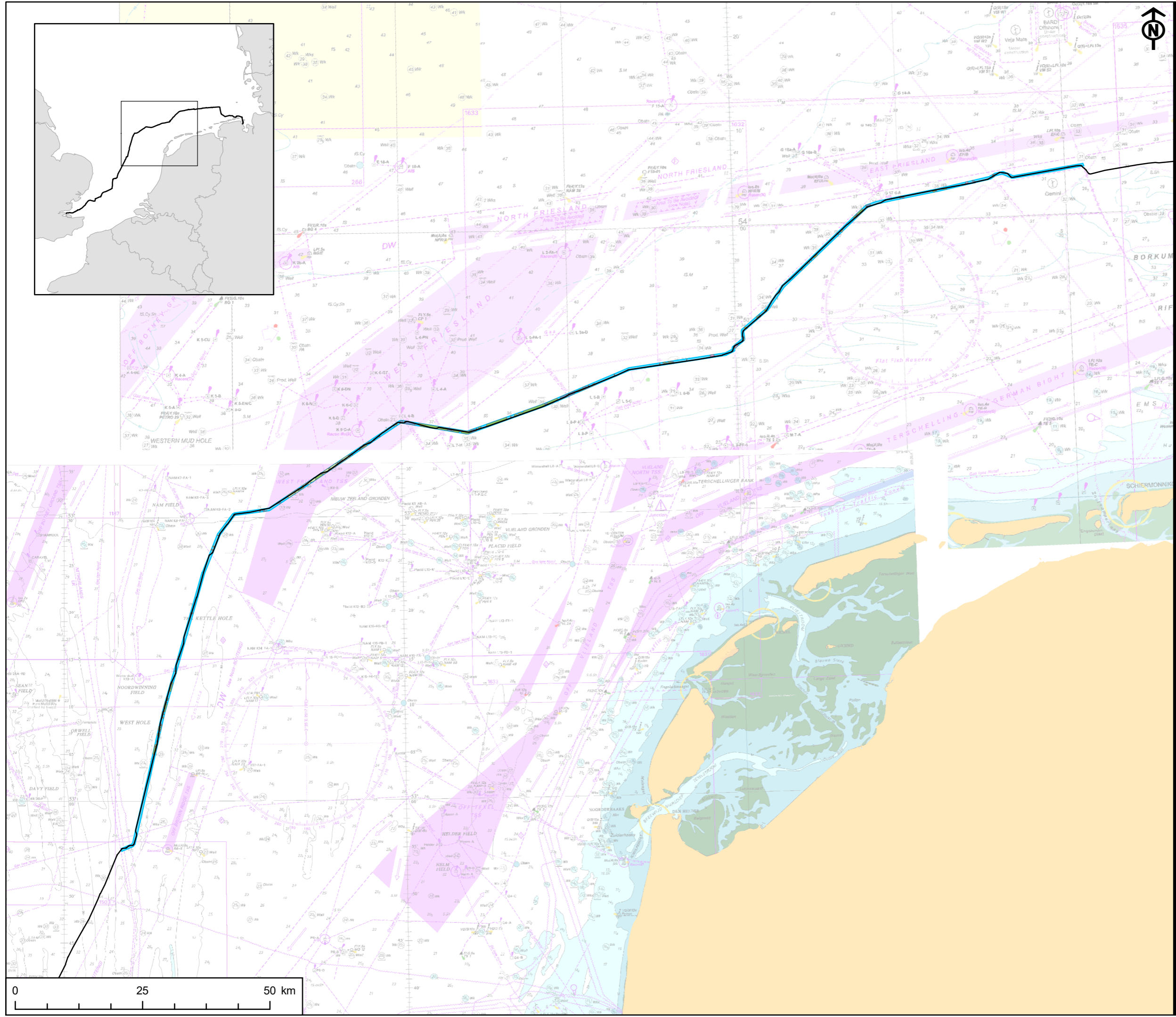
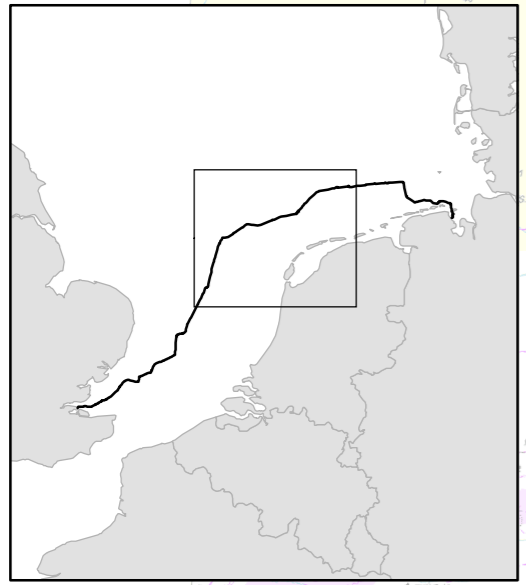


PROJECT
NEUCONNECT
CLIENT
NeuConnect Britain Ltd.

- KEY
-  Proposed cable route
 -  Geophysical study area
 -  Channel
 -  Older channel
 -  Coarse-grained deposit
 -  Cut and fill
 -  High amplitude reflector
 -  Older high amplitude reflector

Project Management Initials: AB Designer: KJF Checked: ## Approved: ##



This drawing has been produced for the use of AECOM's client. It may not be used, modified or relied upon by third parties, except as agreed by AECOM or as required by law. AECOM accepts no responsibility, and denies any liability whatsoever, to any party that uses or relies upon this drawing without AECOM's express written consent. All dimensions are indicative and in metres unless otherwise noted. Do not scale this document.

TITLE
FIGURE 3
PALAEOGEOGRAPHIC FEATURES OF
ARCHAEOLOGICAL POTENTIAL
WITHIN NEUCONNECT CABLE
CORRIDOR

REFERENCE
NC_210820_Tech_Dutch_Fig01

SHEET NUMBER
1 of 1

DATE
20/08/21

Scale @ A3 1:700,000